

**M Sh2d5 Antibody (Center)**  
**Affinity Purified Rabbit Polyclonal Antibody (Pab)**  
**Catalog # AP20512c**

**Specification**

---

**M Sh2d5 Antibody (Center) - Product Information**

Application	WB,E
Primary Accession	<a href="#">Q8JZW5</a>
Reactivity	Mouse
Host	Rabbit
Clonality	Polyclonal
Isotype	Rabbit IgG
Calculated MW	47380
Antigen Region	200-230

**M Sh2d5 Antibody (Center) - Additional Information**

**Gene ID** 230863

**Other Names**

SH2 domain-containing protein 5, Sh2d5

**Target/Specificity**

This Mouse Sh2d5 antibody is generated from rabbits immunized with a KLH conjugated synthetic peptide between 200-230 amino acids from the Central region of mouse Sh2d5.

**Dilution**

WB~~1:1000

E~~Use at an assay dependent concentration.

**Format**

Purified polyclonal antibody supplied in PBS with 0.09% (W/V) sodium azide. This antibody is purified through a protein A column, followed by peptide affinity purification.

**Storage**

Maintain refrigerated at 2-8°C for up to 2 weeks. For long term storage store at -20°C in small aliquots to prevent freeze-thaw cycles.

**Precautions**

M Sh2d5 Antibody (Center) is for research use only and not for use in diagnostic or therapeutic procedures.

**M Sh2d5 Antibody (Center) - Protein Information**

**Name** Sh2d5 {ECO:0000312|MGI:MGI:2446215}

**Function** May be involved in synaptic plasticity regulation through the control of Rac-GTP levels.

**Cellular Location**

Postsynaptic density

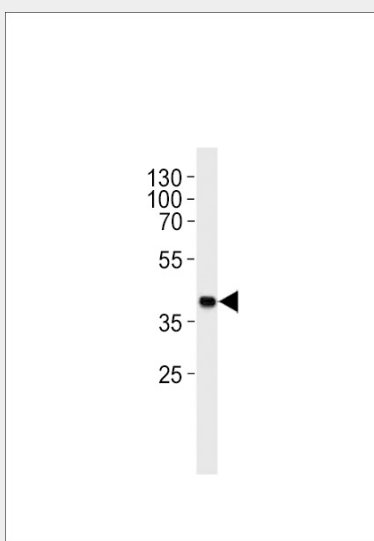
**Tissue Location**

Highly expressed in brain, particularly in Purkinje cells in the cerebellum and the cornu ammonis of the hippocampus.

**M Sh2d5 Antibody (Center) - Protocols**

Provided below are standard protocols that you may find useful for product applications.

- [Western Blot](#)
- [Blocking Peptides](#)
- [Dot Blot](#)
- [Immunohistochemistry](#)
- [Immunofluorescence](#)
- [Immunoprecipitation](#)
- [Flow Cytometry](#)
- [Cell Culture](#)

**M Sh2d5 Antibody (Center) - Images**

Mouse Sh2d5 Antibody (Center) (Cat. #AP20512c) western blot analysis in mouse heart tissue lysates (35ug/lane). This demonstrates the mouse Sh2d5 antibody detected the mouse Sh2d5 protein (arrow).

**M Sh2d5 Antibody (Center) - Background**

The function of this protein is unknown.

**M Sh2d5 Antibody (Center) - References**

Trinidad J.C., et al. Mol. Cell. Proteomics 5:914-922(2006).  
Munton R.P., et al. Mol. Cell. Proteomics 6:283-293(2007).